



## **AGENDA**

### **CHARTER AUTHORIZING PANEL**

March 15, 2017

Arkansas Department of Education

ADE Auditorium

2:00 PM

- I. Chair's Report**
- II. Consent Agenda** 3
- III. Action Agenda**
  - 1. Request for Open-Enrollment Charter School Amendments: Arkansas Connections Academy (ARCA) 6  
On November 17, 2015, the open-enrollment charter Arkansas Connections Academy (ARCA) was authorized, and its contract expires on June 30, 2021. ARCA is approved to serve students in grades K-12 with a maximum enrollment of 3,000. Representatives of ARCA are appearing before the Charter Authorizing Panel to request an amendment to the current charter.  
Presenter: Virginia Perry
  - 2. Request for Open-enrollment Charter School Amendments: School for Integrated Academics and Technologies (SIATech) 9  
On January 10, 2011, the open-enrollment charter School for Integrated Academics and Technologies (SIATech) was authorized, and a renewal hearing was conducted on February 18, 2016. The authorizer approved a three-year renewal of the charter, and the contract expires on June 30, 2019. SIATech is approved to serve students in grades 9-12 with a maximum enrollment of 275. Representatives of SIATech are appearing before the Charter Authorizing Panel to request an amendment to the current charter.  
Presenter: Virginia Perry

### 3. Hearing and Potential Action on Open-Enrollment Charter: Rockbridge 55

#### Montessori School

The Charter Authorizing Panel will conduct a full review of the Rockbridge Montessori School open-enrollment charter. Possible actions are placing the school on probation, modifying the open-enrollment charter, and/or revoking the charter. The reasons for this review and potential action by the Charter Authorizing Panel include, but are not limited to, issues concerning the charter's special education program, the charter's governance, and financial concerns that may 1) constitute material violations of the charter, 2) demonstrate failure to comply with applicable laws or regulations, 3) demonstrate failure to satisfy generally accepted accounting standards of fiscal management, and/or 4) demonstrate failure to meet fiscal performance criteria deemed appropriate and relevant for the public charter school by the authorizer.

Presenter: MaryPerry

### 4. State Board of Education Request

The Charter Authorizing Panel will consider a request made by the State Board of Education at its regularly scheduled meeting on March 9, 2017. The State Board of Education formally requested that the Charter Authorizing Panel review Covenant Keepers Charter School regarding academic performance, including but not limited to, identifying the challenges and if the challenges are correctable.

**Minutes  
Charter Authorizing Panel  
February 15, 2017**

The Charter Authorizing Panel met on Wednesday, February 15, 2017, in the auditorium of the Department of Education building. Deborah Coffman, Chair, called the meeting to order at 8:36 a.m.

Present: Deborah Coffman, Chair; Dr. Mark Gotcher, Vice Chair; Stacy Smith; Bobby Lester; Ivy Pfeffer; Greg Rogers; Dr. Eric Saunders; Lisa Haley, Annette Barnes (present when the meeting reconvened)

The transcription of this meeting may be accessed on the Arkansas Department of Education website at the following:

<http://www.arkansased.gov/about-ade/charter-authorizing-panel/minutes/archive/2016>

**Reports**

Ms. Coffman welcomed the members of the Panel and the audience.

Ms. Coffman provided the audience with instructions pertinent to the proceedings. There were no reports provided.

**Consent Agenda**

It was moved by Dr. Saunders, seconded by Mr. Rogers, and carried unanimously to approve the consent agenda.

Items included in the Consent Agenda: Minutes- December 13-15, 2016 and January 18, 2017.

**Action Agenda**

Arkansas Department of Education staff attorney Jennifer Davis provided the Panel with directions for the proceedings. She also explained the public voting procedures to the Panel and the audience.

**A-1 Request for District Conversion Public Charter School Amendment: Warren Middle School**

Principal Kathy Cornish presented the Panel with the Warren Middle School request. A question and answer period followed.

It was moved by Dr. Saunders, seconded by Mr. Rogers, and carried unanimously to approve the amendment request for a waiver change.

**Adjournment**

Ms. Coffman adjourned the meeting at 8:45 a.m.

Deborah Coffman, Chair, reconvened the meeting at 1:24 p.m.

**A-2 Request for Open-Enrollment Public Charter School Amendment: KIPP Delta Public Schools**

Executive Director Scott Shirey presented the KIPP Delta amendment request.

A question and answer period followed.

It was moved by Ms. Smith, seconded by Dr. Saunders, and carried unanimously to approve the amendment request.

**A-3 Request for Open-Enrollment Public Charter School Amendment: Arkansas Connections Academy**

School leader Darla Gardner presented the Arkansas Connections Academy amendment request.

A question and answer period followed.

It was moved by Dr. Saunders, seconded by Ms. Smith, and carried by a 7-0 vote. Ms. Barnes abstained.

It was moved by Mr. Rogers, seconded by Ms. Barnes, and approved unanimously, to request Arkansas Connections Academy to appear at a special meeting in March to discuss the charter's waiver of Ark. Code Ann. § 6-17-1117, pertaining to health insurance.

**A-4 Request for Open-Enrollment Public Charter School Amendment: Arkansas Virtual Academy**

Superintendent Dr. Scott Sides presented the Arkansas Virtual Academy amendment request.

A question and answer period followed.

Dr. Sides withdrew the Arkansas Virtual Academy request.

No action was required.

**Discussion**

A discussion period followed on compliance concerns with Rockbridge Montessori Academy. The focal areas for discussion were special education, governance and financial matters. It was moved by Mr. Rogers, seconded by Mr. Lester, and carried unanimously to conduct a review during the special meeting on March 15, 2017.

**Adjournment**

It was moved by Dr. Gotcher, seconded by Ms. Barnes, and carried unanimously to adjourn.

The meeting adjourned at 4:06 p.m.

*Minutes recorded by Freddie Scott*

---

Deborah Coffman, Charter Authorizing Panel Chair

## ARKANSAS CONNECTIONS ACADEMY

SPONSORING ENTITY: ARKANSAS CONNECTIONS ACADEMY, INC.

### CURRENT DATA

Maximum Enrollment	3,000
Approved Grade Levels	K-12
Grades Served 2016-2017	K-9

### 2016-2017 Enrollment by Race

Two or More Races	25
Asian	2
Black	53
Hispanic	27
Native American/Native Alaskan	6
Native Hawaiian/Pacific Islander	0
White	230
<b>Total</b>	<b>343</b>

### 2016-2017 Enrollment by Grade

Kindergarten	23
1st Grade	15
2nd Grade	21
3rd Grade	28
4th Grade	31
5th Grade	25
6th Grade	37
7th Grade	52
8th Grade	54
9th Grade	57

### 2016-2017 Student Status Counts

Migrant	0
LEP	8
Gifted & Talented	20
Special Education	37
Title I	202
Source: District Cycle 4 Report	

### BACKGROUND

Authorized November 17, 2015  
Contract Expiration June 30, 2021

Amendment Request Considered and APPROVED May 18, 2016  
Relocate campus from 609 SW 8th St to 1009 Beau Terre Drive



# Arkansas Department of Education

*Transforming Arkansas to lead the nation in student-focused education*

**Johnny Key**  
*Commissioner*

March 8, 2017

**State Board  
of Education**

**Mireya Reith**  
*Fayetteville  
Chair*

Darla Gardner, Principal  
Arkansas Connections Academy  
1009 Beau Terre Drive, Building O  
Bentonville, Arkansas 72712

## **Re: Charter Authorizing Panel-Amendment Request**

**Dr. Jay Barth**  
*Little Rock  
Vice Chair*

Dear Ms. Gardner:

**Joe Black**  
*Newport*

I received your letter dated March 8, 2017, requesting a waiver of Section 4.02.3 of the ADE Rules Governing Public Charter Schools that states requests for amendments will be heard at the February and October authorizer meetings, and Section 4.02.5 of the rules that requires amendment requests to be submitted thirty-five (35) days before the authorizer meeting where the amendment request will be heard.

**Susan Chambers**  
*Bella Vista*

**Charisse Dean**  
*Little Rock*

Arkansas Connections is requesting an amendment to allow rescission of two waivers previously received, but not being used or needed by the charter school. As you stated, Arkansas Connections is asking for a waiver in order to have its amendment request considered by the Charter Authorizing Panel at the March hearing.

**Dr. Fitz Hill**  
*Little Rock*

**Ouida Newton**  
*Poyen*

Pursuant to Section 4.02.7 of the ADE Rules Governing Public Charter Schools, I will grant a waiver of the February/October amendment hearing dates and the 35-day requirement in order to allow this amendment request to appear on the March agenda of the Charter Authorizing Panel.

**R. Brett Williamson**  
*El Dorado*

**Diane Zook**  
*Melbourne*

Sincerely,

**Johnny Key**  
Commissioner

Four Capitol Mall  
Little Rock, AR  
72201-1019  
(501) 682-4475  
ArkansasEd.gov

*An Equal  
Opportunity  
Employer*



## ARKANSAS DEPARTMENT OF EDUCATION

### Charter Amendment Request Form

**Charter Name:** Arkansas Connections Academy

**LEA Number:** 04-44-701      **Phone Number:** 479-283-9544      **Submission Date:** 03/08/2017

**Charter Leader:** Darla Gardner

**Email Address:** dagardner@arca.connectionacademy.org

#### Type of Amendment Requested:

☒ **Other**

Rescind waivers of the following:

- Ark. Code Ann. § 6-17-1111, Life and disability insurance – Employee eligibility – allocation of costs, and
- Ark. Code Ann. § 6-17-1117, Health insurance.

Because all Arkansas Connections staff are employees of Connections Education and contracted to the Arkansas charter, staff are eligible for benefits through Connections' plans, including health, life, disability, vision, dental insurances and other benefits/programs. As a nationwide educational services provider, Connections is able to pool risk to offer a competitive benefits package and recruit and retain effective administrators and teachers. Waivers of the these statutes, that were requested and approved in the charter application, are not needed by the charter:



## SIATech Charter School

SPONSORING ENTITY: ARKANSAS SCHOOL FOR INTEGRATED TECHNOLOGIES AND ACADEMICS, INC.

### MISSION STATEMENT

The Mission of the Arkansas School for Integrated Academics and Technologies Little Rock, Inc. (SIATech Inc.) is to provide a premiere high school drop-out recovery program engaging students through relationship-focused, high-tech, and rigorous learning experiences resulting in Real Learning for Real Life ®.

### CURRENT DATA

Maximum Enrollment	275
Approved Grade Levels	9-12
Grades Served 2016-2017	9-12

#### 2016-2017 Enrollment by Race

Two or More Races	1
Asian	1
Black	156
Hispanic	8
Native American/Native Alaskan	0
Native Hawaiian/Pacific Islander	0
White	5
<b>Total</b>	<b>171</b>

#### 2016-2017 Enrollment by Grade

9th Grade	45
10th Grade	59
11th Grade	40
12th Grade	27

#### 2016-2017 Student Status Counts

Migrant	0
LEP	7
Gifted & Talented	0
Special Education	3
Title I	0
Source: District Cycle 4 Report	

#### 2015-2016 Average Daily Attendance

	Q1	Q2	Q3	Q4
ADA	70.72	65.69	70.88	129.55
ADM	155.58	134.91	152.4	140.21
%	45.46%	48.69%	46.51%	92.40%

### BACKGROUND

Authorized January 10, 2011  
Contract Expiration June 30, 2019

**Amendment Request Considered and APPROVED**  
Relocation

May 13, 2013

**Amendment Request Considered and APPROVED**

November 13, 2013

Relocation

**Special Panel Appearance**

May 14, 2014

Standards Assurance Monitoring Unit identified problems during a site visit, including curriculum not aligned to Common Core and inconsistencies in student records. No action was taken.

**Designated a Priority School**

August 31, 2015

**Renewal and Priority Status Hearing**

February 18, 2016

No action taken regarding priority status

Charter renewed for 3 years

Waivers granted for the following:

6-13-615

6-13-619(c) and (d)

6-13-621

6-13-628

6-13-630

6-13-631

6-13-632

6-13-634

6-13-635

6-14-101 et seq.



# Arkansas Department of Education

*Transforming Arkansas to lead the nation in student-focused education*

**Johnny Key**  
*Commissioner*

March 1, 2017

**State Board  
of Education**

Mireya Reith  
*Fayetteville*  
**Chair**

Dr. Jay Barth  
*Little Rock*  
**Vice Chair**

Joe Black  
*Newport*

Susan Chambers  
*Bella Vista*

Charisse Dean  
*Little Rock*

Dr. Fitz Hill  
*Little Rock*

Ouida Newton  
*Poyen*

R. Brett Williamson  
*El Dorado*

Diane Zook  
*Melbourne*

Dr. Katie Tatum, Director  
SIATech Charter School  
6724 Interstate 30  
Little Rock, Arkansas 72209

## **Re: Charter Authorizing Panel-Amendment Request**

Dear Dr. Tatum:

I received your letter dated February 24, 2017, requesting a waiver of Section 4.02.3 of the ADE Rules Governing Public Charter Schools that states requests for amendments will be heard at the February and October authorizer meetings, and Section 4.02.5 of the rules that requires amendment requests to be submitted thirty-five (35) days before the authorizer meeting where the amendment request will be heard.

SIATech is requesting an amendment to allow its school to move to a four (4) day school instructional week. As you stated, SIATech is asking for a waiver in order to have its amendment request considered by the Charter Authorizing Panel at the March hearing.

Pursuant to Section 4.02.7 of the ADE Rules Governing Public Charter Schools, I will grant a waiver of the February/October amendment hearing dates and the 35-day requirement in order to allow this amendment request to appear on the March agenda of the Charter Authorizing Panel.

Sincerely,

Johnny Key  
Commissioner

Four Capitol Mall  
Little Rock, AR  
72201-1019  
(501) 682-4475  
ArkansasEd.gov

*An Equal  
Opportunity  
Employer*



February 24, 2017

School Commissioner Johnny Key  
Four Capitol Mall, Room 304-A  
Little Rock, Arkansas 72201

RE: Charter School Amendment Request

Dear Commissioner Key,

This letter is a special request that School for Integrated Academics and Technologies (SIATECH) be added to the agenda of the March Charter Authorizing Panel meeting for Amendments to our Charter. It is our desire to implement a four day school instructional week with Tuesday and Thursday being extended days with the following waivers. Those waivers are:

- 6-16-102 School day hours
- Final ADE Rules and Regulations Four-day School Weeks

I'm also requesting a waiver of 4.02.3 and 4.02.5 for SIATech Charter to be placed on the March agenda of the Charter Authorizing Panel meeting that will be held March 15.

Thank you for your consideration of this matter. I look forward to hearing from you soon.

Sincerely,

Katie Hatley Tatum, Ed.S  
Director/Principal  
SIATech Charter Little Rock

Cc: Dr. Linda Dawson, CEO

6724 Interstate 30  
Little Rock, AR 72209  
PH 501.562.0395  
info@siatech.org  
www.siatech.org





# ARKANSAS DEPARTMENT OF EDUCATION

## Charter Amendment Request Form

**Charter Name:** School for Integrated Academics and Technologies (SIATECH LR)

**LEA Number:** 6052700      **Phone Number:** 501-562-0395      **Submission Date:** 2/24/2017

**Charter Leader:** Katie Hatley Tatum

**Email Address:** katie.tatum@siatech.org

### Type of Amendment Requested:

☒ **Other**

SIATech requests to change instructional days from five to four each week and extending two of the four days each week.

According to the National Conference of State Legislatures (NCSL), a four day week can save a district at least 2.5% in operational costs. In addition it benefits students by allowing them to be more rested and engaged in class, decreases absenteeism, and allows more planning and collaboration among educators. All of these characteristics will have a positive impact on operational costs and student achievement.

SIATech wishes to rescind its waiver of the Final Arkansas Department of Education Rules and Regulations Four-day School Weeks.



**SIATECH  
APPROVED WAIVERS**

<b>District LEA:</b>	60-52-700	<b>Elementary School LEA:</b>	N/A
<b>City:</b>	Little Rock	<b>Middle School LEA:</b>	N/A
<b>Opening Date:</b>	Fall 2011	<b>High School LEA:</b>	60-52-703
<b>Grades Approved:</b>	9-12	<b>Expiration Date:</b>	6/30/2019
<b>CAP:</b>	275	<b>Grades Served 2016-2017:</b>	9-12

**Waivers from Title 6 of the Arkansas Code Annotated (Education Code)**

6-10-106	School year dates
6-11-129	Data to be accessible on website
6-13-109	School superintendent
6-13-608	Length of directors' terms
6-13-611	Vacancies generally
6-13-615	Election—Single member zones
6-13-616	Director eligibility
6-13-619(c) and (d)	Monthly meetings
6-13-620	Powers and duties
6-13-621	Authority to convey section lands
6-13-628	Purchases in small communities without bids
6-13-630	Election by zone and at large
6-13-631	Effect of minority population on election
6-13-632	Adequate meeting facilities required
6-13-634	School district board of directors—Size
6-13-635	School board review and approval of salary increases
6-14-101 et seq.	School Elections
6-15-1004	Qualified teachers in every public school classroom
6-15-2302	General business manager—Responsibilities—Minimum qualifications
• 6-16-102	School day hours
6-16-124	Arkansas history (to be incorporated into other social studies curriculum)
6-17-111	Duty-free lunch periods
6-17-114	Daily planning period
6-17-203	Committees on personnel policies—Members
6-17-301	Employment of certified personnel
6-17-302	Principals—Responsibilities
6-17-309	Certification to teach grade or subject matter—Exceptions—Waivers
6-17-401	Teacher licensure requirement
6-17-418	Teacher licensure—Arkansas history requirement
6-17-902	Definition (definition of a teacher as licensed)
6-17-908	Teachers' salary fund—Authorized disbursements
6-17-919	Warrants void without valid certification and contract
6-17-1501 et seq.	Teacher Fair Dismissal Act
6-17-1701 et seq.	Public School Employee Fair Hearing Act
6-17-2403	Minimum teacher compensation schedule



6-18-213(f)	Policy of dropping a student who is absent from daily attendance for more than 10 consecutive school days, except as allowed by rule, from attendance records of the school
6-18-1001 et seq.	Public School Student Services Act
6-20-2208(c)(6)	Monitoring of expenditures (gifted and talented)
6-25-101 et seq.	Public School Library and Media Technology Act
6-42-101 et seq.	General Provisions (gifted and talented)

---

**Waivers from ADE Rules Governing Standards for Accreditation of Arkansas Public Schools and Districts**

9.03.1.2	The Smart Core curriculum contained within 38 units that must be taught each year
9.03.4	Grades 9-12 (courses to be taught, requiring the 38 units of credit)
9.03.4.11	AP Courses
10.01.3	At least 10 days or 60 hours shall be used for professional development and in-service training and at least two (2) days shall be used for parent/teacher conferences
14.03	Unit of credit and clock hours for a unit of credit
15	Personnel
16.01.3	Requiring a certified counselor at each school at a ratio of 1 to 450
16.02	Media Services
16.03.3	Student health records
18	Gifted and Talented Education

**Waivers from Other Rules:**

ADE Rules Governing Parental Notification of an Assignment of a Non-Licensed Teacher to Teach a Class for More than Thirty (30) Consecutive Days and for Granting Waivers

ADE Rules Governing Mandatory Attendance Requirements for Students in Grades Nine through Twelve

ADE Rules Governing Nutrition and Physical Activity Standards and Body Mass Index for Age Assessment Protocols in Arkansas Public Schools (those portions of the standards involving Ark. Code Ann. § 6-16-132)

- Final ADE Rules and Regulations Four-day School Weeks
- Certified staff salary schedule

**Certain provisions of state law shall not be waived. The public charter school is subject to any prohibition, restriction, or requirement imposed by Title 6 of the Arkansas Code Annotated and any rule and regulation approved by the State Board of Education under this title relating to:**

- Monitoring compliance with Arkansas Code Annotated § 6-23-101 et seq. as determined by the Commissioner of the Department of Education;
- Conducting criminal background checks for employees;
- High school graduation requirements as established by the State Board of Education;
- Special education programs as provided by this title;
- Public school accountability under this title;
- Ethical guidelines and prohibitions as established by Arkansas Code Annotated § 6-24-101 et seq., and any other controlling state or federal law regarding ethics or conflicts of interest; and
- Health and safety codes as established by the State Board of Education and local governmental entities.

Also, any teacher, whether licensed or unlicensed, who teaches a core academic subject area must meet the requirements of the ADE Rules Governing Arkansas Qualified Teacher Requirements. Core academic subjects include English Language Arts, Mathematics, Science, Social Studies, Early Childhood (Elementary), Music, Art and Foreign Language.

# SIATech Little Rock Charter

## School for Integrated Academics and Technologies

### ENROLLMENT REPORT

Enrollment Date: Feb 22, 2017

Enrollment Count		09	10	11	12	Race Totals
Asian	Females				1	1
	Gender Totals				1	1
Black	Females	17	25	21	12	75
	Males	23	20	18	8	69
	Gender Totals	40	45	39	20	144
Hispanic	Females		4			4
	Males	4	2	1		7
	Gender Totals	4	6	1		11
White	Females				3	3
	Males	1	3	1	2	7
	Gender Totals	1	3	1	5	10
Grade Totals		45	54	41	26	166



# SIATech Little Rock Charter MEAL STATUS COUNTS

## Meal Status for Active Students As Of: Feb 22, 2017 at 2:53:53 PM

Students listed below have no Meal Status Program record and are not included in the meal status counts/detail on this report.

No Data Available

### District Meal Status Counts

Grade/Meal Status	01	03	04	Totals
09	21	2	22	45
10	28	1	25	54
11	26		15	41
12	17	1	8	26
<b>Totals</b>	<b>92</b>	<b>4</b>	<b>70</b>	<b>166</b>

### Meal Status Counts by Building

School for Integrated Academics and Technologies

---

Grade/Meal Status	01	03	04	Totals
09	21	2	22	45
10	28	1	25	54
11	26		15	41
12	17	1	8	26
<b>Totals</b>	<b>92</b>	<b>4</b>	<b>70</b>	<b>166</b>

---



# **SIATECH LITTLE ROCK**

## **FY18 PRELIMINARY BUDGET**

### **SUMMARY**

#### REVENUES

State revenue	1,273,629
Federal revenue	<u>112,500</u>
<b>TOTAL REVENUES</b>	<b><u>1,386,129</u></b>

#### EXPENDITURES

Salaries and benefits	633,517
Purchased services	393,700
Supplies and materials	316,200
Capital outlay	-
Other expenditures	<u>23,450</u>
<b>TOTAL EXPENDITURES</b>	<b><u>1,366,867</u></b>

EXCESS OF REVENUES OVER (UNDER) EXPENDITURES 19,262

OTHER FINANCING SOURCES (USES) \_\_\_\_\_

NET CHANGE IN FUND BALANCE 19,262



# **SIATECH LITTLE ROCK**

## **FY18 PRELIMINARY BUDGET**

### **REVENUE DETAIL**

#### STATE REVENUE

Charter School Funding	1,096,590
Professional Development	4,298
English Language Learners	2,317
National School Lunch Act 59 (Nsla)	170,424

TOTAL STATE REVENUE	1,273,629
---------------------	-----------

#### FEDERAL REVENUE

Title I-A	40,000
Lunch Reimbursement	15,000
Performance Base Lunch Reimbursement	500
Breakfast Reimbursement	7,000
Title VI-B	30,000
Arkansas Medicaid Administrative Claiming	15,000
Title II-A	5,000

TOTAL FEDERAL REVENUE	112,500
-----------------------	---------

TOTAL REVENUE	1,386,129
---------------	-----------





# SIATECH LITTLE ROCK

## FY18 PRELIMINARY BUDGET

### EXPENDITURE DETAIL

#### SALARIES AND BENEFITS

Salaries	479,937
Benefits	153,580
TOTAL SALARIES AND BENEFITS	633,517

#### PURCHASED SERVICES

Central Administration	30,100
Board Of Director Service	1,800
Substitutes	1,000
Curriculum Development	30,100
Professional Development	29,600
Cls Prof Development	500
Audit Services	7,500
Accounting Services	30,100
Legal Services	1,000
Related Services	1,200
Security Services	57,600
Social Worker	40,100
Water/Sewer	3,600
Disposal/Sanitation	3,600
Custodial	21,600
Lawn Care	5,000
Repair & Maintenance	10,000
Building Rental	70,500
Copier Machine	6,800
Student Transportation	5,000
Property Insurance	3,500
Liability Insurance	6,000
Accident Insurance (Students)	4,000
Telecommunications	8,000
Postage	2,500
Advertising	5,000
Travel	8,000
TOTAL PURCHASED SERVICES	393,700

#### SUPPLIES AND MATERIALS

Classroom Supplies	15,000
Nurse Supplies	1,200
Office Supplies	10,000
Building Supplies	3,000
Supplies Homeless	1,100
Nat.Gas	2,400
Electricity	18,000
Food	37,000

2

Curriculum/Network Service	<u>228,500</u>
TOTAL SUPPLIES AND MATERIALS	<u>316,200</u>
OTHER EXPENDITURES	
Dues & Fees	7,200
Interest	6,750
Property Tax	9,000
Misc Expenditures	500
TOTAL OTHER EXPENDITURES	<u>23,450</u>
TOTAL EXPENDITURES	<u><u>1,366,867</u></u>



**SIATECH LITTLE ROCK**  
**FY18 PRELIMINARY BUDGET**  
**SALARY DETAIL**

FTE	POSITION	CALENDAR	SALARY
1.0	Principal	230	90,363
1.0	LEA Supervisor/Sped Teacher	194	67,065
1.0	Administrative Assistant	230	32,259
1.0	Specialist: APSCN	230	44,463
5.0	Classroom Teachers	194	197,770
1.0	Specialist: ITA/Testing	194	27,738
0.4	Nurse	180	9,631
0.5	Meals - Food Server	180	10,648

479,937



## SIATech Little Rock Charter ADA/ADM Report

### Dates Between Aug 19, 2016 and Aug 19, 2016

Grade	Average Daily Membership	Average Daily Attendance	Attendance Rate
09	58.00	22.00	37.93%
10	51.00	18.00	35.29%
11	40.00	14.00	35.00%
12	35.00	10.00	28.57%
School for Integrated Academics and Technologies	184.00	64.00	34.78%

### Dates Between Aug 26, 2016 and Aug 26, 2016

Grade	Average Daily Membership	Average Daily Attendance	Attendance Rate
09	58.00	13.50	23.28%
10	53.00	12.00	22.64%
11	39.00	11.00	28.21%
12	34.00	6.00	17.65%
School for Integrated Academics and Technologies	184.00	42.50	23.10%

### Dates Between Sep 2, 2016 and Sep 2, 2016

Grade	Average Daily Membership	Average Daily Attendance	Attendance Rate
09	49.00	13.00	26.53%
10	52.00	12.50	24.04%
11	33.00	7.00	21.21%
12	29.00	5.00	17.24%
School for Integrated Academics and Technologies	163.00	37.50	23.01%

### Dates Between Sep 9, 2016 and Sep 9, 2016

Grade	Average Daily Membership	Average Daily Attendance	Attendance Rate
09	48.00	8.50	17.71%
10	50.00	16.00	32.00%
11	32.00	8.50	26.56%
12	28.00	6.00	21.43%
School for Integrated Academics and Technologies	158.00	39.00	24.68%

### Dates Between Sep 16, 2016 and Sep 16, 2016

Grade	Average Daily Membership	Average Daily Attendance	Attendance Rate
09	48.00	14.00	29.17%
10	52.00	17.00	32.69%
11	30.00	10.50	35.00%
12	31.00	9.00	29.03%
School for Integrated Academics and Technologies	161.00	50.50	31.37%

### Dates Between Sep 23, 2016 and Sep 23, 2016

Grade	Average Daily Membership	Average Daily Attendance	Attendance Rate
09	47.00	12.00	25.53%
10	50.00	12.00	24.00%
11	31.00	9.50	30.65%
12	30.00	6.50	21.67%
School for Integrated Academics and Technologies	158.00	40.00	25.32%



**Dates Between Sep 30, 2016 and Sep 30, 2016**

Grade	Average Daily Membership	Average Daily Attendance	Attendance Rate
09	46.00	12.00	26.09%
10	56.00	13.00	23.21%
11	37.00	10.50	28.38%
12	32.00	9.50	29.69%
School for Integrated Academics and Technologies	171.00	45.00	26.32%

**Dates Between Oct 7, 2016 and Oct 7, 2016**

Grade	Average Daily Membership	Average Daily Attendance	Attendance Rate
09	46.00	22.50	48.91%
10	56.00	26.00	46.43%
11	38.00	19.00	50.00%
12	31.00	9.50	30.65%
School for Integrated Academics and Technologies	171.00	77.00	45.03%

**Dates Between Oct 21, 2016 and Oct 21, 2016**

Grade	Average Daily Membership	Average Daily Attendance	Attendance Rate
09	47.00	14.50	30.85%
10	57.00	17.00	29.82%
11	41.00	10.00	24.39%
12	30.00	4.50	15.00%
School for Integrated Academics and Technologies	175.00	46.00	26.29%

**Dates Between Oct 28, 2016 and Oct 28, 2016**

Grade	Average Daily Membership	Average Daily Attendance	Attendance Rate
09	47.00	25.50	54.26%
10	56.00	26.50	47.32%
11	42.00	15.50	36.90%
12	31.00	9.00	29.03%
School for Integrated Academics and Technologies	176.00	76.50	43.47%

**Dates Between Nov 4, 2016 and Nov 4, 2016**

Grade	Average Daily Membership	Average Daily Attendance	Attendance Rate
09	46.00	41.00	89.13%
10	51.00	49.00	96.08%
11	39.00	34.00	87.18%
12	26.00	24.00	92.31%
School for Integrated Academics and Technologies	162.00	148.00	91.36%

**Dates Between Nov 11, 2016 and Nov 11, 2016**

Grade	Average Daily Membership	Average Daily Attendance	Attendance Rate
09	43.00	33.00	76.74%
10	51.00	38.00	74.51%
11	37.00	30.50	82.43%
12	29.00	18.50	63.79%
School for Integrated Academics and Technologies	160.00	120.00	75.00%

**Dates Between Nov 18, 2016 and Nov 18, 2016**

Grade	Average Daily Membership	Average Daily Attendance	Attendance Rate
09	42.00	32.00	76.19%

10	50.00	30.50	61.00%
11	35.00	20.00	57.14%
12	27.00	14.50	53.70%
School for Integrated Academics and Technologies	154.00	97.00	62.99%

#### Dates Between Dec 2, 2016 and Dec 2, 2016

Grade	Average Daily Membership	Average Daily Attendance	Attendance Rate
09	41.00	31.50	76.83%
10	47.00	38.50	81.91%
11	38.00	28.00	73.68%
12	25.00	17.50	70.00%
School for Integrated Academics and Technologies	151.00	115.50	76.49%

#### Dates Between Dec 9, 2016 and Dec 9, 2016

Grade	Average Daily Membership	Average Daily Attendance	Attendance Rate
09	42.00	22.50	53.57%
10	48.00	30.50	63.54%
11	35.00	16.50	47.14%
12	26.00	11.00	42.31%
School for Integrated Academics and Technologies	151.00	80.50	53.31%

#### Dates Between Dec 16, 2016 and Dec 16, 2016

Grade	Average Daily Membership	Average Daily Attendance	Attendance Rate
09	39.00	17.00	43.59%
10	48.00	24.00	50.00%
11	32.00	15.00	46.88%
12	24.00	12.00	50.00%
School for Integrated Academics and Technologies	143.00	68.00	47.55%

#### Dates Between Jan 13, 2017 and Jan 13, 2017

Grade	Average Daily Membership	Average Daily Attendance	Attendance Rate
09	43.00	15.50	36.05%
10	49.00	16.50	33.67%
11	36.00	8.00	22.22%
12	25.00	7.00	28.00%
School for Integrated Academics and Technologies	153.00	47.00	30.72%

#### Dates Between Jan 20, 2017 and Jan 20, 2017

Grade	Average Daily Membership	Average Daily Attendance	Attendance Rate
09	45.00	14.50	32.22%
10	49.00	14.50	29.59%
11	39.00	7.00	17.95%
12	26.00	9.50	36.54%
School for Integrated Academics and Technologies	159.00	45.50	28.62%

#### Dates Between Feb 3, 2017 and Feb 3, 2017

Grade	Average Daily Membership	Average Daily Attendance	Attendance Rate
09	44.00	10.00	22.73%
10	53.00	10.50	19.81%
11	40.00	6.00	15.00%
12	26.00	10.00	38.46%

School for Integrated Academics and Technologies	163.00	36.50	22.39%
--	--------	-------	--------

**Dates Between Feb 9, 2017 and Feb 9, 2017**

Grade	Average Daily Membership	Average Daily Attendance	Attendance Rate
09	43.00	9.00	20.93%
10	55.00	12.00	21.82%
11	39.00	7.00	17.95%
12	25.00	4.00	16.00%
School for Integrated Academics and Technologies	162.00	32.00	19.75%

## 2016 ESEA DISTRICT REPORT SIATECH LITTLE ROCK CHARTER

**Superintendent:** KATIE TATUM  
**LEA:** 6052700  
**Enrollment:** 166

**Attendance:** 46.80  
**Poverty Rate:** 81.33

**Address:** 6724 INTERSTATE 30  
LITTLE ROCK, AR 72209  
**Phone:** (501) 562-1850

<b>OVERALL DISTRICT STATUS:</b>	<b>2014 NEEDS IMPROVEMENT</b>
---------------------------------	-------------------------------

### PERCENT TESTED

PERCENT TESTED STATUS:	NEEDS IMPROVEMENT					
	ELA			MATHEMATICS		
ESEA Flexibility Indicators	# Attempted	# Expected	Percentage	# Attempted	# Expected	Percentage
All Students	27	84	32.14	27	84	32.14
Targeted Achievement Gap Group	23	64	35.94	25	64	39.06
ESEA Subgroups	# Attempted	# Expected	Percentage	# Attempted	# Expected	Percentage
African American	25	78	32.05	25	78	32.05
Hispanic	n < 10	n < 10	n < 10	n < 10	n < 10	n < 10
White	n < 10	n < 10	n < 10	n < 10	n < 10	n < 10
Economically Disadvantaged	23	64	35.94	25	64	39.06
English Language Learners	n < 10	n < 10	n < 10	n < 10	n < 10	n < 10
Students with Disabilities	n < 10	n < 10	n < 10	n < 10	n < 10	n < 10

### 2016 STUDENT PERFORMANCE -- ENGLISH LANGUAGE ARTS

ESEA Flexibility Indicators	# Achieved	# Tested	Percentage	State Average % Achieved
All Students	n < 10	n < 10	n < 10	47.87
Targeted Achievement Gap Group	n < 10	n < 10	n < 10	36.87
ESEA Subgroups	# Achieved	# Tested	Percentage	State Average % Achieved
African American	n < 10	n < 10	n < 10	27.81
Hispanic	n < 10	n < 10	n < 10	41.05
White	n < 10	n < 10	n < 10	55.31
Economically Disadvantaged	n < 10	n < 10	n < 10	37.65
English Language Learners	n < 10	n < 10	n < 10	30.15
Students with Disabilities	n < 10	n < 10	n < 10	12.35

### 2016 STUDENT PERFORMANCE -- MATHEMATICS

ESEA Flexibility Indicators	# Achieved	# Tested	Percentage	State Average % Achieved
All Students	n < 10	n < 10	n < 10	43.35
Targeted Achievement Gap Group	n < 10	n < 10	n < 10	34.25
ESEA Subgroups	# Achieved	# Tested	Percentage	State Average % Achieved
African American	n < 10	n < 10	n < 10	23.53
Hispanic	n < 10	n < 10	n < 10	38.01
White	n < 10	n < 10	n < 10	50.35
Economically Disadvantaged	n < 10	n < 10	n < 10	34.76
English Language Learners	n < 10	n < 10	n < 10	31.69
Students with Disabilities	n < 10	n < 10	n < 10	12.35

### 2015 SCHOOL GRADUATION RATE

ESEA Flexibility Indicators	# Actual Graduates	# Expected Graduates	Percentage	2015 State Average Percentage
All Students	23	142	16.20	85.71
Targeted Achievement Gap Group	15	79	18.99	82.59
Three Year Average Performance	# Actual Graduates	# Expected Graduates	Percentage	2015 State Average Percentage
All Students	52	335	15.52	85.87
Targeted Achievement Gap Group	33	206	16.02	82.01
ESEA Subgroups	# Actual Graduates	# Expected Graduates	Percentage	2015 State Average Percentage
African American	18	110	16.36	78.66
Hispanic	n < 10	n < 10	n < 10	85.43
White	5	24	20.83	88.13
Economically Disadvantaged	15	77	19.48	82.42
English Language Learners	n < 10	n < 10	n < 10	86.45
Students with Disabilities	n < 10	n < 10	n < 10	82.56

## 2016 ESEA DISTRICT REPORT SIATECH LITTLE ROCK CHARTER

**Superintendent:** KATIE TATUM  
**LEA:** 6052700  
**Enrollment:** 166

**Attendance:** 46.80  
**Poverty Rate:** 81.33

**Address:** 6724 INTERSTATE 30  
LITTLE ROCK, AR 72209  
**Phone:** (501) 562-1850

### Percent Tested: Source and Use of Enrollment

For percent tested and school/district performance calculations, student enrollment files were downloaded from eSchool via TRIAND to establish the students expected to test. These files were downloaded April 29, 2016.

When students' test and enrollment records were matched by school and student state identifier, the demographic values from the enrollment files were used in ESEA calculations.

When a student had a test record, but a matching enrollment record was not found, the demographic values from the student's test record were used in ESEA calculations.

When a student had an enrollment record that did not match a test record, the demographic values from the student's enrollment record were used in ESEA percent tested calculations.

### District Performance

The district performance results in this report include students who completed a full academic year (not highly mobile) and completed a regular or alternate assessment. Students who were considered highly mobile were excluded from the calculations. All grades are included in the district performance for each subject.

### Average State Performance

The average state performance statistics listed in this report include students who completed a full academic year (not highly mobile) and completed a regular or alternate assessment. Students who were considered highly mobile were excluded from the calculations. All grades are included in the state averages for each subject.

**The school performance results in this report include students who completed a full academic year (not highly mobile) and completed a regular or an alternate assessment.**

**Report created on: 11/14/2016**

**From:** Kenneth James [mailto: ]  
**Sent:** Monday, February 27, 2017 9:28 AM  
**To:** Johnny Key (ADE) < >  
**Subject:** SIA Tech Request

Commissioner: I hope this short note finds you well. The purpose of my short note is to offer my support of the Amendment Waiver Request recently submitted by SIATECH CEO Linda Dawson and Principal Katie Tatum. I have known Linda Dawson for years and worked with her in San Diego. SIA TECH is a unique school that is providing strong educational opportunities for students who otherwise would not have a pathway to re-engage in the system.

Thank you for your consideration of their request to go before the Charter panel in March and their request to alter their school schedule.

Best,

Ken

Dr. Ken James, President  
Arkansas Advanced Initiative for Math and Science  
University of Arkansas at Little Rock  
Speech 217  
2801 S. University  
Little Rock, AR 72204  
501-366-3839





# SIATECH CHARTER HIGH SCHOOL

Little Rock  
March 15, 2017

# STATISTICS AND RESEARCH - ATTENDANCE

## It may improve attendance

Research performed on student attendance in 4-day week schools shows that attendance has improved as a result. The main reason for this is that many parents would schedule doctor's appointments on off days. In addition, giving students a longer weekend may increase their motivation. One district in Montana reported a 19% improvement in attendance after going from a five-day schedule to a four-day school week.

### Sources and References:

National Conference of State Legislatures	Washington Post	Center for Public Education
University of Southern Maine	Education Commission of the States	Minnesota 2020
Melstone Public Schools	Association for Education Finance and Policy	Gallup/Student Surveys
Northwest Missouri State University	North Dakota State University	University of Phoenix College of Education



# STATISTICS AND RESEARCH - ACADEMICS

## It can improve learning

Recent studies show that learning capabilities of students who are enrolled in 4-day-week schools seemed to improve, which means that they seem to be focusing more on their studies and increasing their knowledge. As for the teachers, they also seemed to be focusing their lesson plans more on ensuring that most important subjects are being taught and keeping students more on track. Even though only a slight improvement in performance was seen, the important thing is that a shortened school week does not negatively affect the learning abilities of students, which matters most.

### Sources and References:

National Conference of State Legislatures	Washington Post	Center for Public Education
University of Southern Maine	Education Commission of the States	Minnesota 2020
Melstone Public Schools	Association for Education Finance and Policy	Gallup/Student Surveys
Northwest Missouri State University	North Dakota State University	University of Phoenix College of Education

# STATISTICS AND RESEARCH - ACADEMICS

## **Some states also report a boost academically**

In some school districts where test scores have been historically low, the introduction of a four-day week has led to a dramatic improvement in student achievement. Overall, a shorter school schedule resulted in a 7% increase in math scores and a 3% gain in reading.

### **Sources and References:**

National Conference of State Legislatures	Washington Post	Center for Public Education
University of Southern Maine	Education Commission of the States	Minnesota 2020
Melstone Public Schools	Association for Education Finance and Policy	Gallup/Student Surveys
Northwest Missouri State University	North Dakota State University	University of Phoenix College of Education

# STATISTICS AND RESEARCH - TIME

## **A four-day school week doesn't mean less classroom time**

One of the misconceptions surrounding four-day school weeks is that it costs students valuable instruction time. However, that's not the case. In districts where students are limited to four classroom days, the school day is simply extended by 60 to 90 minutes. This also gives instructors more flexibility for differentiated lessons as well as group teaching/study opportunities.

### **Sources and References:**

National Conference of State Legislatures	Washington Post	Center for Public Education
University of Southern Maine Melstone Public Schools	Education Commission of the States Association for Education Finance and Policy	Minnesota 2020 Gallup/Student Surveys
Northwest Missouri State University	North Dakota State University	University of Phoenix College of Education

# Four-Day School Weeks

No. of states with four-day weeks: **21**

No. of school districts: **120**

Average annual savings per district: **0.4 to 2.5%**

## Pros:

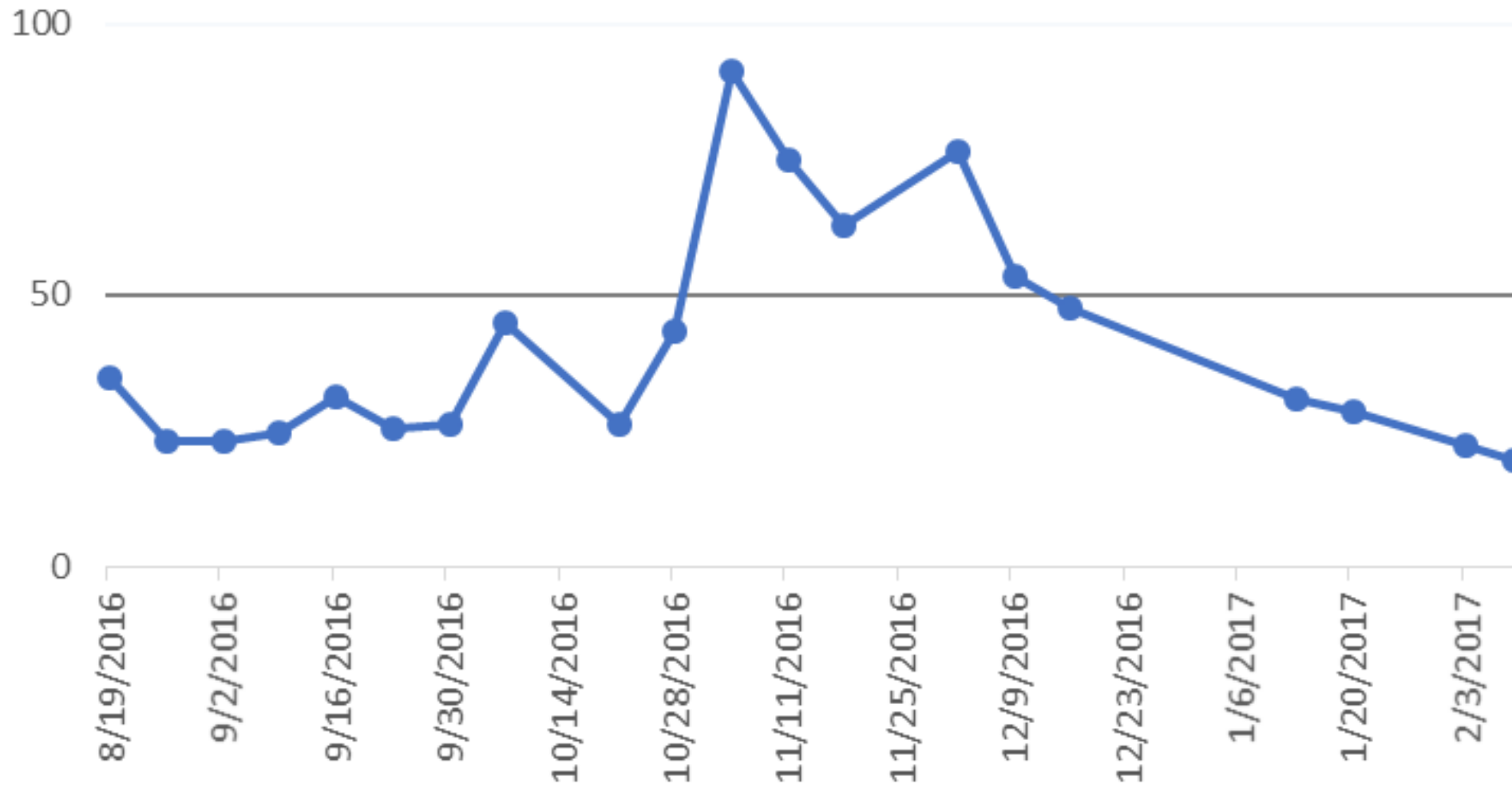
- Students better rested and more engaged in class
- Decrease in absenteeism
- More planning and collaborative time for educators

## Cons:

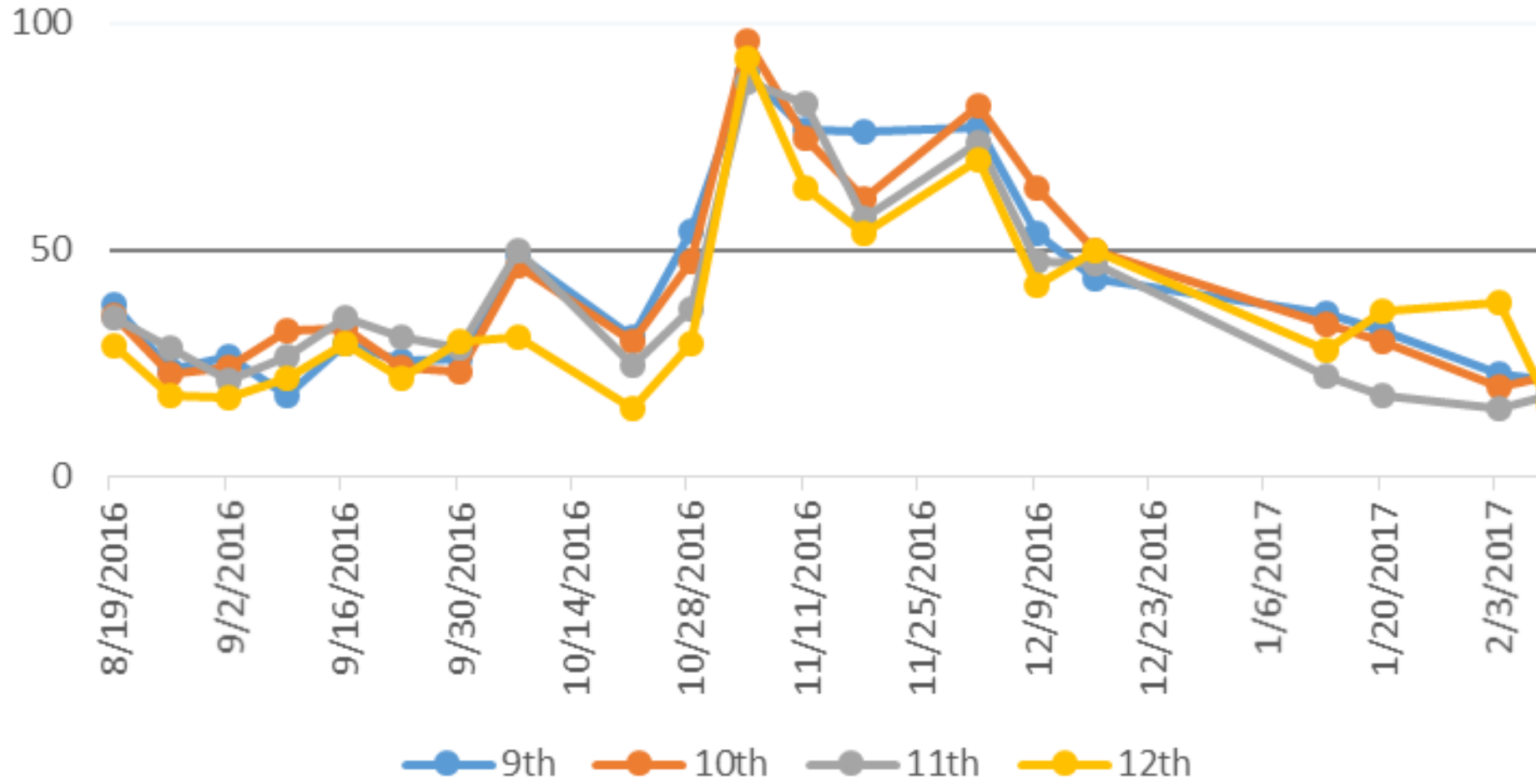
- Potential new costs for parents
- Loss of wages for support professionals (bus drivers and food service workers)
- Reduced access to school services for low-income students



## Total Friday Attendance by Percentage



## Friday Attendance by Grade Level



# OCTOBER 2016 MEALS ~ FEBRUARY 2017 MEALS

47



**Bill To:**  
 SIA TEC CHARTER HIGH SCHOOL  
 ATTN: KATIE TATUM  
 6724 INTERSTATE 30  
 LITTLE ROCK AR 72209

Date	Invoice Number	Page
10/24/2016	INV2200023963	1
Please Include Invoice Number With Remittance to Assure Proper Credit		



**Bill To:**  
 SIA TEC CHARTER HIGH SCHOOL  
 ATTN: KATIE TATUM  
 6724 INTERSTATE 30  
 LITTLE ROCK AR 72209

Date	Invoice Number	Page
02/27/2017	INV2200029916	1
Please Include Invoice Number With Remittance to Assure Proper Credit		

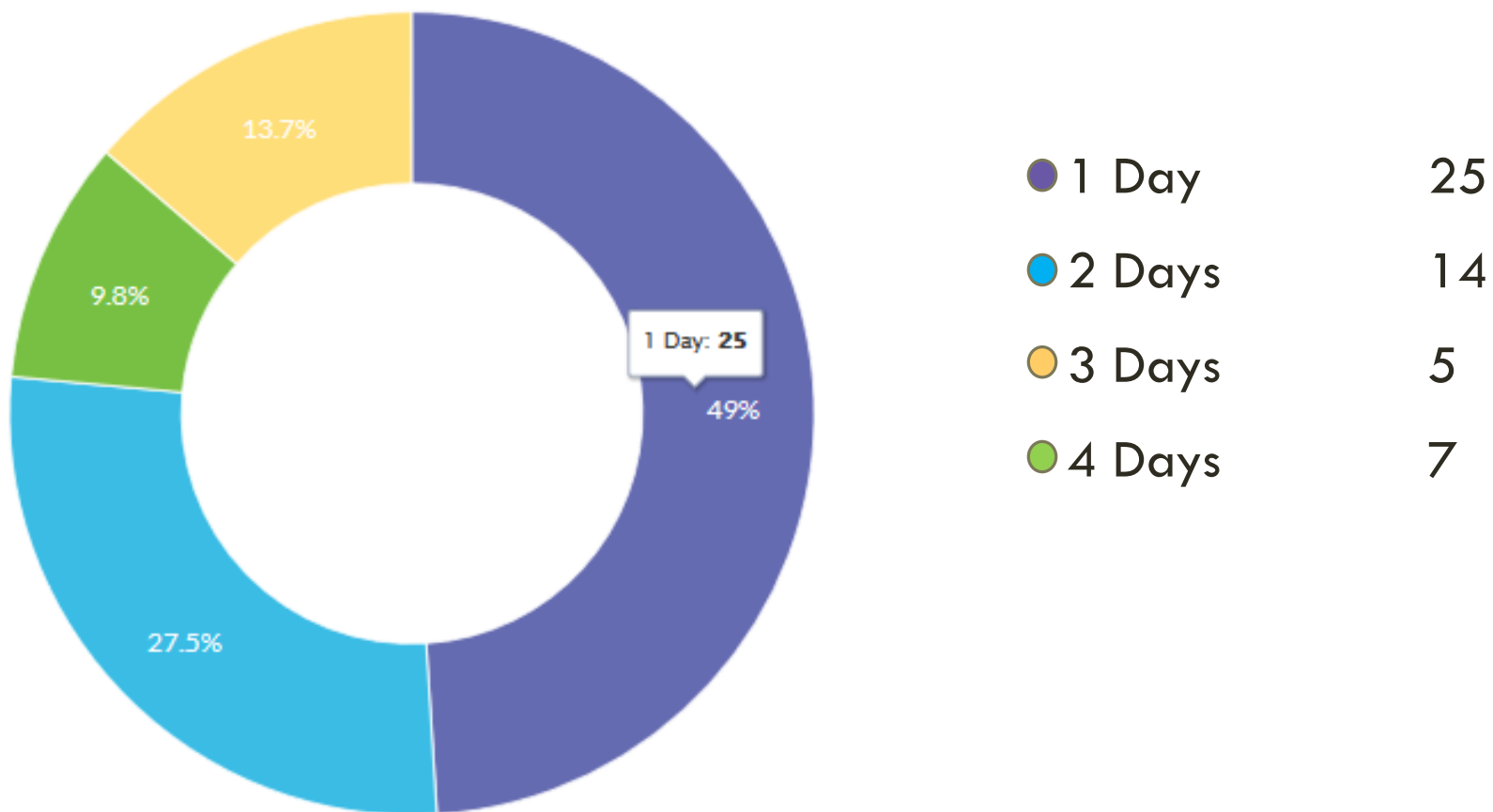
Purchase Order No.	Customer ID	Salesperson ID	Payment Terms	Due Date	Federal Tax ID
	A6450004		Net 30	11/23/2016	64-0932878
Activity Date	Item Number	Description	Quantity	Unit Price	Extended Price
10/21/2016	A6450004-A6310-1-609A	BREAKFAST	200.00	1.5500	\$310.00
10/21/2016	A6450004-A6310-1-609B	LUNCH	300.00	2.9600	\$888.00

Purchase Order No.	Customer ID	Salesperson ID	Payment Terms	Due Date	Federal Tax ID
	A6450004		Net 30	03/29/2017	64-0932878
Activity Date	Item Number	Description	Quantity	Unit Price	Extended Price
02/24/2017	A6450004-A6310-1-609A	BREAKFAST	100.00	1.5500	\$155.00
02/24/2017	A6450004-A6310-1-609B	LUNCH	140.00	2.9600	\$414.40



# STUDENT SURVEY RESPONSES

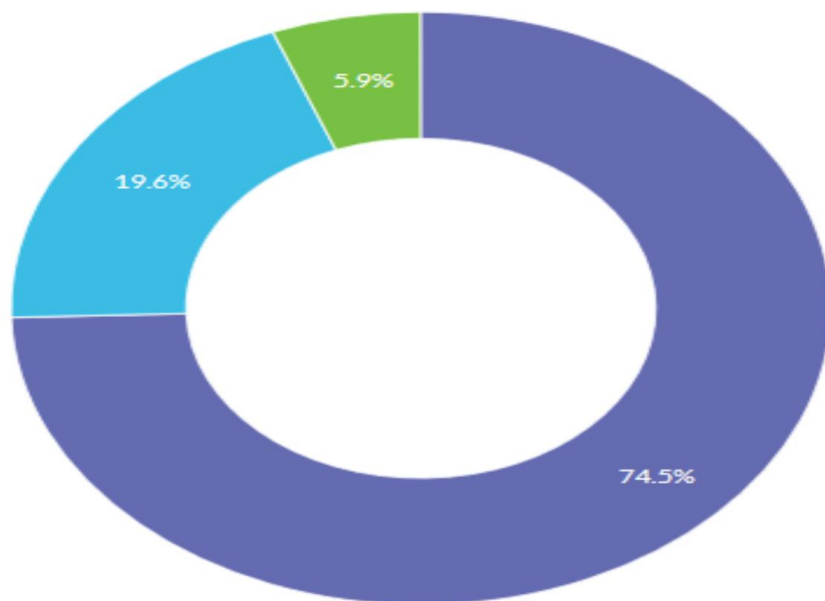
On average, how often are you unable to attend school?





# STUDENT SURVEY RESPONSES

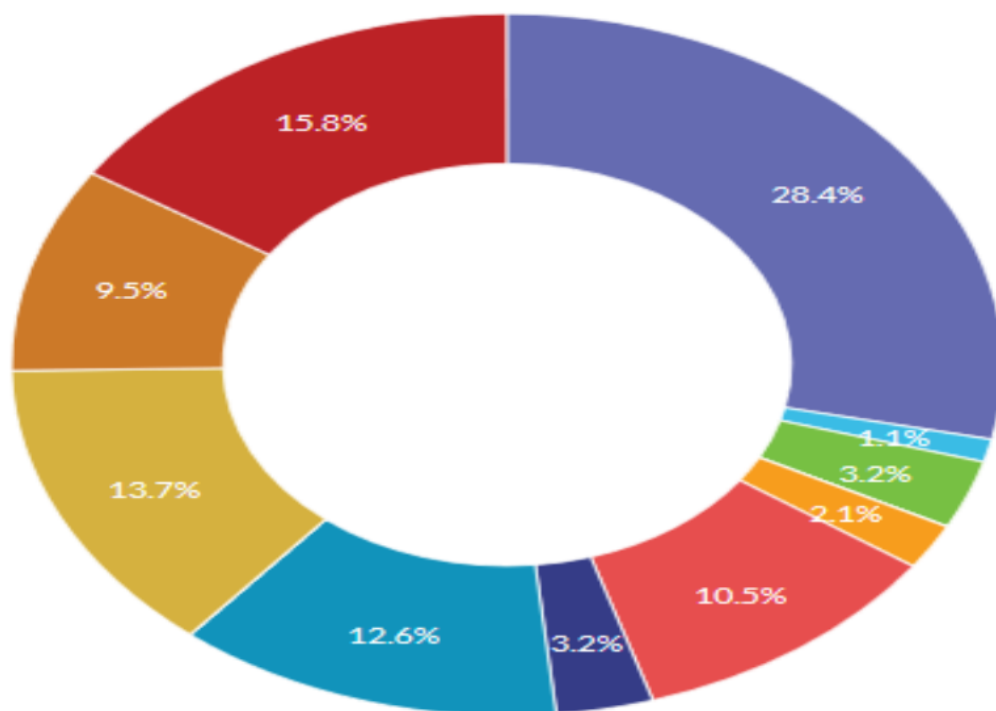
How many days have you missed this year?



● Less than 5 days	38
● 5 to 10 days	10
● More than 10 days	3

# STUDENT SURVEY RESPONSES

I missed school this year because...



I was sick	27
Other	15
Lack of transportation	13
Personal issues at home	12
I had to work	10
I have not missed school this year	9
Didn't know how to do the work	3
School is not important to me	3
I was depressed	2
Drug/Alcohol Usage	1
Hanging out with friends	0
I was being bullied	0

# BENEFITS OF A 4-DAY WEEK

## STUDENT BENEFITS

- Flexibility with work schedules. 60% of our students work.
- Flexibility with travel for students who live outside of Little Rock and North Little Rock (See October 1)
- Helps with child care
- Extended days will allow students who are on a deadline to finish, complete earlier than scheduled
- Allows more time for differentiated instruction.
- Allows teachers to increase co-teaching and scaffolding methods for students during the school day.
- Increases academic retention for students who are able to attend more regularly.

# INCENTIVES FOR STUDENTS

- Dress down passes
- Pizza party for students who make reading or math gains
- Reward cards for students who have perfect attendance for the month
- SIATech t-shirts for all students to be worn instead of uniform shirts
- Highlight student of the month
- Opportunity to become a peer leader/ambassador

**GRADUATES**

School Year 2013-2014		
	December 2013	26
	June 2014	30

School Year 2014-2015		
	May 2015	39

School Year 2015-2016		
	December 2015	25
	June 2016	35

School Year 2016-2017		
	To-Date	12



**Katie Hatley Tatum**  
**Director/Principal**  
**[Katie.tatum@siatech.org](mailto:Katie.tatum@siatech.org)**

**CEO Dr. Linda Dawson**  
**[Linda.dawson@siatech.org](mailto:Linda.dawson@siatech.org)**



# Arkansas Department of Education

*Transforming Arkansas to lead the nation in student-focused education*

February 16, 2017

Johnny Key  
*Commissioner*

Steven Nuckols, Superintendent  
Rockbridge Montessori School  
108 West Roosevelt  
Little Rock, AR 72206

State Board  
of Education

Mireya Reith  
*Fayetteville*  
Chair

**RE: Notice of Charter Authorizing Panel Hearing March 15, 2017**  
**(Via Hand Delivery, Email Delivery, and Certified Mail)**

Dr. Jay Barth  
*Little Rock*  
Vice Chair

Dear Mr. Nuckols:

Joe Black  
*Newport*

This letter serves as notification that the Charter Authorizing Panel will conduct a hearing concerning the Rockbridge Montessori School at its meeting on Wednesday, **March 15, 2017**. The meeting will begin at **2:00 p.m. in the Auditorium of the Arch Ford Education Building, Four Capitol Mall, Little Rock, Arkansas.**

Susan Chambers  
*Bella Vista*

The Charter Authorizing Panel will conduct a full review of the Rockbridge Montessori School open-enrollment charter, pursuant to Ark. Code Ann. § 6-23-105. The possible actions allowed by the statute include placing the school on probation, modifying the open-enrollment charter, and/or revoking the charter. The reasons for this review and potential action by the Charter Authorizing Panel include, but are not limited to, issues concerning the charter's special education program, the charter's governance, and financial concerns that may 1) constitute material violations of the charter, 2) demonstrate failure to comply with applicable laws or regulations, 3) demonstrate failure to satisfy generally accepted accounting standards of fiscal management, and/or 4) demonstrate failure to meet fiscal performance criteria deemed appropriate and relevant for the public charter school by the authorizer.

Charisse Dean  
*Little Rock*

Dr. Fitz Hill  
*Little Rock*

Ouida Newton  
*Poyen*

R. Brett Williamson  
*El Dorado*

Diane Zook  
*Melbourne*

The hearing will be conducted pursuant to the legal authority and jurisdiction vested in the Charter Authorizing Panel by Ark. Code Ann. § 6-23-101 et seq. and the Arkansas Department of Education (ADE) Rules Governing Public Charter Schools (Charter School Rules). A copy of the Charter School Rules can be found, under the heading "Charter School Rules (PDF)," at the following link:

<http://www.arkansased.org/divisions/legal/rules/current>.

Four Capitol Mall  
Little Rock, AR  
72201-1019  
(501) 682-4475  
ArkansasEd.gov

The hearing will be conducted pursuant to the procedures in Section 6.24 of the Charter School Rules. As outlined in the hearing procedures, you will have 20 minutes to present information to the Charter Authorizing Panel before the question and answer period. Please address the charter's special education program, the charter's governance, and all financial matters during the presentation. However, be advised that the Charter Authorizing Panel may ask questions about any area of the charter operations. Please be prepared to discuss and bring with you all necessary personnel who can address any questions asked by the Charter Authorizing Panel. Information that you want the Charter

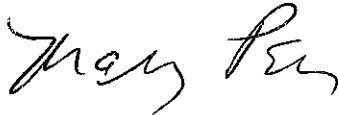
*An Equal  
Opportunity  
Employer*

Authorizing Panel to consider and the slides, if any, that you wish to share during the charter's 20-minute presentation should be submitted to the ADE Charter School Office by **4:00 p.m. on March 2, 2017**. Email information and the presentation to [ade.charterschools@arkansas.gov](mailto:ade.charterschools@arkansas.gov).

Any actions taken by the Charter Authorizing Panel will appear on the State Board of Education's agenda for its April 13, 2017, meeting. The charter or any affected district can request that the State Board review the decision of the Charter Authorizing Panel, or the State Board can choose to review the decision on its own motion. If the charter school or an affected district seeks to request the State Board review a decision, the request must be submitted by email to the ADE Charter School Office by 4:00 p.m. on March 20, 2017.

Please contact Virginia Perry with any questions. She can be reached by phone at (501) 683-5313 or by email at [virginia.perry@arkansas.gov](mailto:virginia.perry@arkansas.gov).

Sincerely,

A handwritten signature in black ink, appearing to read "Mary Perry".

Mary Perry, Coordinator  
Division Learning Services

CC: Casson Brock, Board Chair, Rockbridge Montessori School  
Michael Poore, Superintendent, Little Rock School District





# Arkansas Department of Education

*Transforming Arkansas to lead the nation in student-focused education*

February 13, 2017

**Jolnny Key**  
*Commissioner*

Mr. Stephen Nuckols, Superintendent  
Rockbridge Montessori School  
108 West Roosevelt  
Little Rock, AR 72206

**State Board  
of Education**

Dear Mr. Nuckols:

**Mireya Reith**  
*Fayetteville  
Chair*

Thank you for participating in the special education on-site monitoring process. This letter includes information gathered through the monitoring process and outlines any further documentation to be provided to the Arkansas Department of Education, Special Education Unit (ADE-SEU) during the 90 day verification window that begins January 9, 2017 and ends April 8, 2017.

**Dr. Jay Barth**  
*Little Rock  
Vice Chair*

ADE-SEU reviewed the following information/data submitted by the LEA:

**Joe Black**  
*Newport*

1. Case Management Sheet
2. 6 folders for students who are currently enrolled and receiving services through the district
3. 0 folders for students who graduated during the 2015-2016 school year
4. 0 folders for students who were dismissed from all special education services and are still enrolled in the district
5. General Education Teacher Survey Results
6. Special Education Teacher Survey Results

**Susan Chambers**  
*Bella Vista*

**Charisse Dean**  
*Little Rock*

Additionally, ADE-SEU reviewed Annual Performance Report Indicator data for the district.

**Dr. Fitz Hill**  
*Little Rock*

Teacher Survey Results are attached to this letter.

**Ouida Newton**  
*Poyen*

The ADE-SEU is including the following information to summarize any potential area(s) of non-compliance self-reported by the district.

**R. Brett Williamson**  
*El Dorado*

1. Student Folder Checklist "Yes Report"
2. Student Folder Checklist By Student Report
3. Student Folder Checklist By Question Report "No Report"
4. Verification Calculator tool which lists the number of additional files to review for each area identified as non-compliant.

**Diane Zook**  
*Melbourne*

Rockbridge Montessori will be required to correct all student level non-compliance identified and submit updated evidence from student folders that were not part of the original monitoring review for each area of non-compliance identified. All student-level evidence of correction and updated evidence must reflect conferences/events that occurred after the review of folders as part of self-monitoring or after the on-site review, if applicable.

Four Capitol Mall  
Little Rock, AR  
72201-1019  
(501) 682-4475  
ArkansasEd.gov

The issue areas and number of folders for each issue area are listed on the verification calculator. These documents enable the ADE-SEU to verify the corrections have occurred for individual students for whom non-compliance was identified, and that the non-compliance will not be repeated. All evidence may be submitted via MySped or by an on-site visit by ADE-SEU. I will work with your district to determine the best method for this review of evidence.

*An Equal  
Opportunity  
Employer*

Based on the review of the data submitted, the State Education Agency (SEA) has identified Rockbridge Montessori as not submitting a Teacher Information Sheet and as not providing evidence of an appropriately licensed teacher within the given timeline. The District must follow the procedures set forth through the Standards for Accreditation for a teacher who is teaching out of level/area – Written notice required to parents of students with a teacher who is teaching out-of level/area. Ark.Code Ann. § 6-17-309. If not corrected, this issue will be reflected in the district's accreditation status. Additionally, the district must submit a plan to the Special Education Unit that outlines how the district will ensure that all teachers providing special education services are appropriately licensed.

Additional requirements based on February 7, 2017 onsite visit:

- Rockbridge Montessori will have submitted a completed ALP application for Ms. Gober by Friday, February 10, 2017.
- Rockbridge Montessori will submit a current count of students with IEPs and designate those that receive only speech services by Friday, February 17.

Rockbridge Montessori must also submit, no later than Friday, February 17, 2017, a plan to address the following issues:

1. Schedule and hold conferences for all students with IEPs, that are not Speech only, to review services and make any needed revisions based on IEP team decisions for each individual student.
2. Inform parents of the students that have not received special education services since mid-October of the lapse in services, and review the progress of each affected student to determine if there has been a lack of expected progress toward meeting IEP goals that would indicate the need for compensatory education.
3. Develop a process for monitoring student progress on IEP goals for all students receiving special education, with documentation readily available for ADE Review.

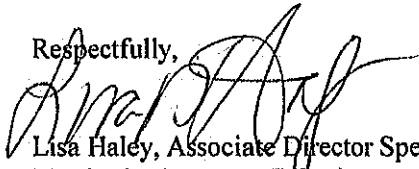
Rockbridge Montessori must submit student schedules, IEP services pages, and decisions regarding the need for compensatory education, to ADE upon completion of the IEP conferences, but no later than March 8, 2017.

For those students determined to need compensatory education services, Rockbridge Montessori must submit documentation of the completion of the services no later than April 8, 2017.

The SEA further has identified that Rockbridge Montessori failed to submit a General Program Checklist. The District will need to submit documentation of a completed General Program Checklist.

The district will receive a final Self-Monitoring Summary review letter after April 8, 2017. Any area(s) in which the LEA is unable to demonstrate substantial compliance during the 90 day verification period will result in a written finding and the LEA will have up to one year to clear the finding(s).

Respectfully,

A handwritten signature in black ink, appearing to read 'Lisa Haley', is written over the typed name.

Lisa Haley, Associate Director Special Education  
Monitoring/Program Effectiveness  
Special Education Unit

cc: Kristin Hughes, State Educational Advisor  
Sarah Gober, Head of Schools  
File

**ROCKBRIDGE MONTESSORI SCHOOL**  
SPONSORING ENTITY: ROCKBRIDGE MONTESSORI SCHOOL

**MISSION STATEMENT**

The mission of Rockbridge Montessori School is to serve and nurture a developing child's mind, emotions, and physical growth through the work of the Montessori Method which offers children a solid bridge to their future so they may discover their paths and find their unique contributions for the greater good of all humanity.

**CURRENT DATA**

Maximum Enrollment	325
Approved Grade Levels	K-8
Grades Served 2016-2017	K-6

2016-2017 Enrollment by Race

Two or More Races	8
Asian	0
Black	102
Hispanic	9
Native American/Native Alaskan	5
Native Hawaiian/Pacific Islander	0
White	27
<b>Total</b>	<b>151</b>

2016-2017 Enrollment by Grade

Kindergarten	30
1st Grade	20
2nd Grade	18
3rd Grade	23
4th Grade	24
5th Grade	17
6th Grade	19
7th Grade	0
8th Grade	0

**2016-2017 Student Status Counts**

Migrant	0
LEP	0
Gifted & Talented	0
Special Education	10
Title I	0
<u>Source: District Cycle 4 Report</u>	

**2016-2017 Lunch Counts**

Free	110
Reduced	0
Paid	41
Percent Free/Reduced	72.85
<u>Source: Child Nutrition Report</u>	

**BACKGROUND**

Authorized	November 19, 2014
Contract Expiration	June 30, 2020

# **ROCKBRIDGE MONTESSORRI SCHOOL GOVERNANCE**

## **BOARD COMPOSITION**

<u>As Approved in Charter Application</u>		Concerns at time of Charter Authorizing Panel Meeting - February 9, 2017	Structure at End of Rockbridge Board Meeting - February 28, 2017
7 members	Responsibilities / Duties	5 members	6 members
President	Calls and presides over board meetings, sets short and long term goals along	Spouses serving as president and vice president	
Vice President	President in his/her absence; other duties as assigned		Vice President resigned
Secretary	Records board meeting minutes and handles written communication	Unclear if officer positions of secretary and/or treasurer are filled	President took notes
Treasurer	Handles all financial matters		
Member at large	Represents faculty, aides, and other staff	Unclear which groups have board representation	
Member at large	Represents community leaders and volunteers		Board voted to add a community representative
Parent representative	To be elected by Parent Teacher Student Association and represent parents		Board voted to add a parent representative

## **BOARD MEETINGS**

### **Tuesday, February 28, 2017 - Agenda**

Attended by ADE team member from the Charter Office

Scheduled emergency meeting for Monday, March 6, 2016

Lasted approximately 45 minutes

### **Monday, March 6, 2016**

Charter team member went to the school for the meeting

Rockbridge Montessori superintendent said that --

board meeting had been held on Friday, March 3

"they" chose additional board members earlier in the day

Charter team member requested a list of board members with contact information

See Tuesday March 7 email with board member information from superintendent

See Tuesday March 7 email requesting board agendas to superintendent

No agenda for any board meeting held after February 28 received as of March 9, 3:00 p.m.

**ARKANSAS DEPARTMENT OF EDUCATION  
SPECIAL EDUCATION CONCERNS:  
ROCKBRIDGE MONTESSORRI SCHOOL**

IEP - Individual Education Program  
PA - ADE Special Education Program Advisor for Nontraditional Programs  
RM - Rockbridge Montessori School  
SPED - Special Education

**Licensed SPED teacher last employed in mid-October 2016**

[December 20, 2016 email](#)

[January 9, 2017 letter](#)

[January 25, 2017 Email received by PA from RM on January 24 forwarded to SPED director](#)

[February 13, 2017 letter](#)

**SPED services for students with IEPs last received in mid-October**

[RM submitted student list, plan, and parent letter dated February 16, 2017](#)

Agreement with special education teacher, currently employed full-time at another district, to assist with paperwork and conferences in the evenings and on weekends

[Memo from special education teacher \(referenced above\) regarding IEP conferences being scheduled for 20 minutes each starting on Thursday, March 3, and ending Sunday, March 5](#)

RM staff interviews revealed that most general education teachers had no copies of IEPs and were not aware of required accommodations

RM submitted ALP for principal to provide special education services

**Failure to meet timelines for fiscal and program monitoring**

[October 18, 2016](#)

[December 20, 2016](#)

[January 3, 2017 - 10:23 a.m.](#)

[January 3, 2017 email - 12:18 p.m.](#)

[January 23, 2017](#)

[January 25, 2017; received by PA from RM on January 24 and forwarded to SPED director](#)

[February 7, 2013](#)

[February 9, 2017](#)

[February 15, 2017](#)

[February 21, 2017](#)

**Inconsistencies in SPED data reported by RM staff**

[RM reported 10 special education students in 2016-2017 Cycle 4 District Report](#)

List of 21 students with IEPs provided on February 21, 2017

RM coded teacher who had been employed until mid-October as a supervisor in Cycle 4

[Non-allowable expenditures coded to Special Education IV-B funds, including a paraprofessional for the general education classroom](#)

**CHRONOLOGY - ARKANSAS DEPARTMENT OF EDUCATION  
SPECIAL EDUCATION UNIT COMMUNICATION:  
ROCKBRIDGE MONTESSORRI SCHOOL**

ADE -	Arkansas Department of Education
IEP -	Individual Education Program
PA -	ADE Special Education Program Advisor for Nontraditional Programs
RM -	Rockbridge Montessori School
SPED -	Special Education
<b>Date</b>	<b>Correspondence and Assistance</b>
<a href="#"><u>August 30, 2016</u></a>	PA sent monitoring timeframe letter to RM
September 21, 2016	Pre-monitoring meeting held with PA and 3 RM staff; discussed documents needed for monitoring; PA informed that special education teacher would be leaving mid- October; discussed long-term substitutes and ALPs
<a href="#"><u>October 18, 2016</u></a>	ADE SPED staff sent email regarding Medicaid information
October 21, 2016	RM curriculum director attended the SPED Updates Professional Development provided by ADE SPED staff
<a href="#"><u>November 2, 2016</u></a>	PA sent onsite monitoring notification to RM
November 17-18, 2017	ADE SPED on-site monitoring of RM; teacher information sheet and General Program Checklist (GPC) that were to have been provided to ADE by these dates were not; were not; discussed long-term substitutes and ALP
November 29, 2016	PA asked RM to submit teacher surveys electronically
<a href="#"><u>December 20, 2016</u></a>	PA requested GPC, Teacher Information Sheet, and documentation that shows who is providing services to students with IEPs
<a href="#"><u>January 3, 2017</u></a>	ADE SPED staff sent notice tht fiscal monitoring information was late
<a href="#"><u>January 3, 2017</u></a>	PA sent first letter of 90 Day Verification Period Findings
<a href="#"><u>January 9, 2017</u></a>	PA requested GPC, Teacher Information Sheet, and documentation that shows who is providing services to students with IEPs
<a href="#"><u>January 23, 2017</u></a>	PA and ADE staff from the Standards Unit visited RM
<a href="#"><u>February 6, 2017</u></a>	ADE SPED staff sent email scheduling visit at RM on February 28 to provide financial technical assistance
<a href="#"><u>February 7, 2017</u></a>	ADE SPED staff sent email documenting phone conversation and offering assistance
<a href="#"><u>February 9, 2017</u></a>	ADE SPED director sent second letter of 90 Day Verification Period Findings
<a href="#"><u>February 13, 2017</u></a>	ADE SPED staff sent email in preparation for onsite visit on February 28
<a href="#"><u>February 15, 2017</u></a>	PA requested information due by February 17, via email at 2:33 p.m.
<a href="#"><u>February 21, 2017</u></a>	RM curriculum director responded to PA' s email
February 28, 2017	PA, SPED finance staff visited RM; requested GPC and Teacher Information Sheet; reminded RM staff of documents, requested in the February 13 letter
<a href="#"><u>March 1, 2017</u></a>	PA provided RM a link to paperwork reduction guide on APED website
<a href="#"><u>March 1, 2017</u></a>	PA provided information on options for reading specialist to provide IEP reading services; requested current and updated services pages of IEPs, and the curriculum director's schedule

## 2016 ESEA DISTRICT REPORT ROCKBRIDGE MONTESSORI

**Superintendent:** WILLIAM STEVENS III  
**LEA:** 6057700  
**Enrollment:** 111

**Attendance:** 95.88  
**Poverty Rate:** 54.95

**Address:** P.O BOX 165116  
 LITTLE ROCK, AR 72216  
**Phone:** (501) 404-9549

**OVERALL DISTRICT STATUS:**

### PERCENT TESTED

**PERCENT TESTED STATUS:** NEEDS IMPROVEMENT

	ELA			MATHEMATICS		
ESEA Flexibility Indicators	# Attempted	# Expected	Percentage	# Attempted	# Expected	Percentage
All Students	48	55	87.27	51	55	92.73
Targeted Achievement Gap Group	29	31	93.55	31	31	100.00
ESEA Subgroups	# Attempted	# Expected	Percentage	# Attempted	# Expected	Percentage
African American	30	33	90.91	31	33	93.94
Hispanic	n < 10	n < 10	n < 10	n < 10	n < 10	n < 10
White	15	18	83.33	16	18	88.89
Economically Disadvantaged	28	29	96.55	29	29	100.00
English Language Learners	n < 10	n < 10	n < 10	n < 10	n < 10	n < 10
Students with Disabilities	n < 10	n < 10	n < 10	n < 10	n < 10	n < 10

### 2016 STUDENT PERFORMANCE -- ENGLISH LANGUAGE ARTS

ESEA Flexibility Indicators	# Achieved	# Tested	Percentage	State Average % Achieved
All Students	12	39	30.77	47.87
Targeted Achievement Gap Group	5	23	21.74	36.87
ESEA Subgroups	# Achieved	# Tested	Percentage	State Average % Achieved
African American	1	21	4.76	27.81
Hispanic	n < 10	n < 10	n < 10	41.05
White	9	15	60.00	55.31
Economically Disadvantaged	4	22	18.18	37.65
English Language Learners	n < 10	n < 10	n < 10	30.15
Students with Disabilities	n < 10	n < 10	n < 10	12.35

### 2016 STUDENT PERFORMANCE -- MATHEMATICS

ESEA Flexibility Indicators	# Achieved	# Tested	Percentage	State Average % Achieved
All Students	9	42	21.43	43.35
Targeted Achievement Gap Group	4	25	16.00	34.25
ESEA Subgroups	# Achieved	# Tested	Percentage	State Average % Achieved
African American	1	22	4.55	23.53
Hispanic	n < 10	n < 10	n < 10	38.01
White	7	16	43.75	50.35
Economically Disadvantaged	3	23	13.04	34.76
English Language Learners	n < 10	n < 10	n < 10	31.69
Students with Disabilities	n < 10	n < 10	n < 10	12.35



## 2016 ESEA DISTRICT REPORT ROCKBRIDGE MONTESSORI

**Superintendent:** WILLIAM STEVENS III  
**LEA:** 6057700  
**Enrollment:** 111

**Attendance:** 95.88  
**Poverty Rate:** 54.95

**Address:** P.O BOX 165116  
LITTLE ROCK, AR 72216  
**Phone:** (501) 404-9549

### Percent Tested: Source and Use of Enrollment

For percent tested and school/district performance calculations, student enrollment files were downloaded from eSchool via TRIAND to establish the students expected to test. These files were downloaded April 29, 2016.

When students' test and enrollment records were matched by school and student state identifier, the demographic values from the enrollment files were used in ESEA calculations.

When a student had a test record, but a matching enrollment record was not found, the demographic values from the student's test record were used in ESEA calculations.

When a student had an enrollment record that did not match a test record, the demographic values from the student's enrollment record were used in ESEA percent tested calculations.

### District Performance

The district performance results in this report include students who completed a full academic year (not highly mobile) and completed a regular or alternate assessment. Students who were considered highly mobile were excluded from the calculations. All grades are included in the district performance for each subject.

### Average State Performance

The average state performance statistics listed in this report include students who completed a full academic year (not highly mobile) and completed a regular or alternate assessment. Students who were considered highly mobile were excluded from the calculations. All grades are included in the state averages for each subject.

**The school performance results in this report include students who completed a full academic year (not highly mobile) and completed a regular or an alternate assessment.**

**Report created on: 11/14/2016**



# Rockbridge Montessori Charter School

Presentation to Charter Authorizing Panel  
March 15, 2017

## General Information

---

- Core Montessori Principal:

*The goal of education should be to cultivate a child's natural desire to learn. This is accomplished in the Montessori classroom in two ways. First, by allowing each child to experience the excitement of learning by making choices and second, by helping children to meet their full potential by preparing the environment to meet the individual needs of all children.*

- Opened in 2015
- Currently serving 151 students, grades K-6
- 73% FRL, 82% minority









## Special Education

---

- We have held productive meetings with members of the ADE Special Education Unit as to educational services and finance issues.
- There has been no interruption in the provision of speech therapy, occupational therapy/physical therapy and psychological evaluation services to our Special Education Students.
- Mrs. Gober's ALP was accepted and she has been working with the students, parents and ADE Special Education Unit to identify and develop a plan for compensatory education for the students.

## Special Education

---

- We are in the process of engaging another Special Education teacher who will help with the compensatory learning.
- We are starting the IEP conference process with our students and their families to ensure that IEPs are composed which address each students needs.
- We are preparing a comprehensive plan to fully address the educational issues of all students receiving Special Education Services.

## Special Education

---

- We are revising our on-site coding system, and working with our financial services provider to provide seamless coding of funds to provide better accuracy and transparency in our usage of monies from which Special Education expenses may be paid.



## Governance

---

- Our charter calls for a governing board composed of seven (7) members, including a parent representative.
- Our actual number of board members has been composed of fewer than seven (7) members, but now contains a full complement of seven (7) members.
- The Board consists of : Casson Brock, Lee Allen, Jeanne Williams, Stephanie Newton, Roy Albert, John Ciak and Randy Sharpe.

## Governance

---

- Our Administrative team consists of: Stephen Nuckols (Superintendent/Principal) and Shannon Nuckols (Curriculum Director and Teacher).
- As part of our Governance Review, we are drafting policy and protocols to ensure compliance with all requirements of the Board Meeting Process.

## Finance

---

- Legal balance as of 3/1/17 - \$239,200
- Federal Start-up Grant:
  - Remaining Funds Available as of 3/1/17 -\$143,803
  - Reimbursement request #1 submitted to the ADE 3/10/17 - \$57,585.80
  - Reimbursement request #2 to be submitted to ADE by 3/17/17 - \$51,625

## Other Factors

---

- We had 180 students enrolled to begin in August. When those students did not begin, cuts were made.
- In addition, Mr. Nuckols was moved from a classroom to a position of responsibility with eSchool, cycle reports, and other financial and day-to-day operations of the school.
- Mrs. Gober applied for an ALP to help with the Special Education issue but was denied.
- When another employee went on a short term health leave, Mrs. Gober worked that area. In addition, Mr. Nuckols sought to hire a special education teacher.

## Other Factors

---

- We have settled into areas where we can help students in the best manner: Mrs. Gober is doing Special Education and Mr. Nuckols is the Head of School.
- As the financial plan is solidified we hope to add another special education teacher to help our students in the least restrictive environment and an office personnel to help Mr. Nuckols with the reports and other office work.